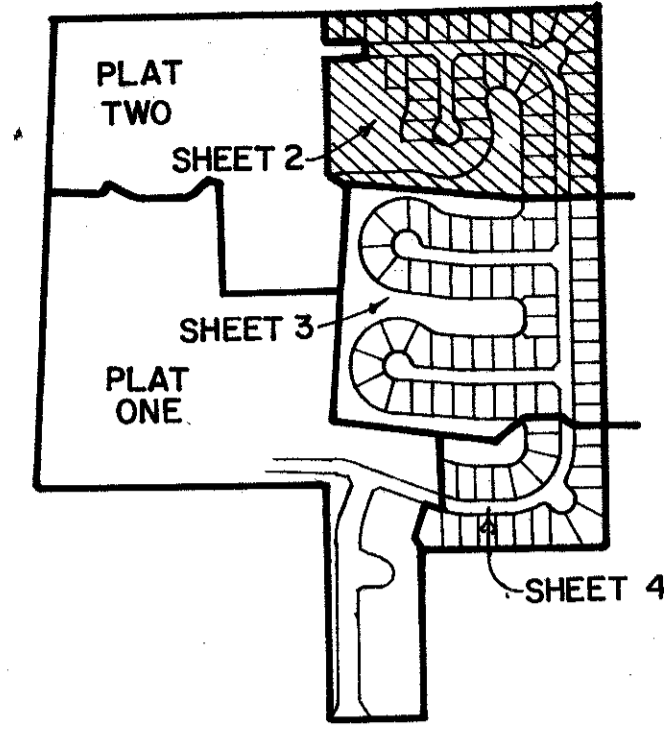


# WOODS WALK PLAT THREE

BEING A REPLAT OF A PORTION OF BLOCK 25 OF PALM BEACH FARMS COMPANY PLAT NO. 3  
PART OF WOODS WALK P.U.D.  
SITUATE IN SECTIONS 19 & 30, TOWNSHIP 44 SOUTH, RANGE 42 EAST  
PALM BEACH COUNTY, FLORIDA

FEBRUARY, 1989

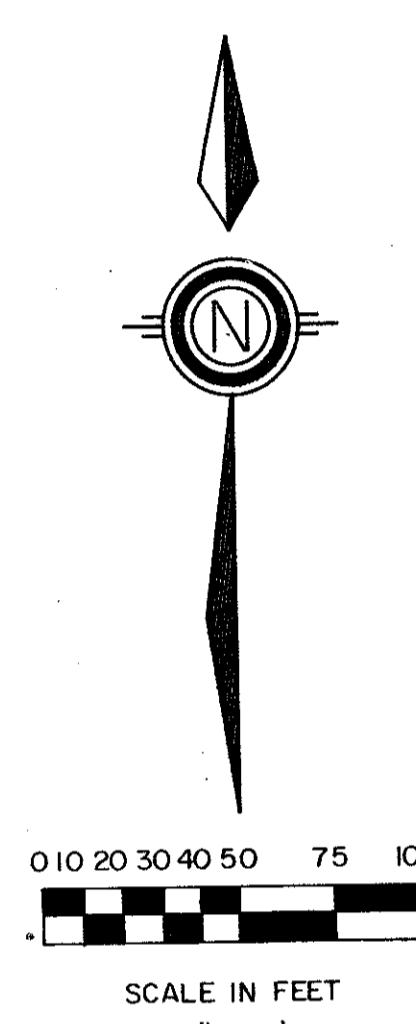
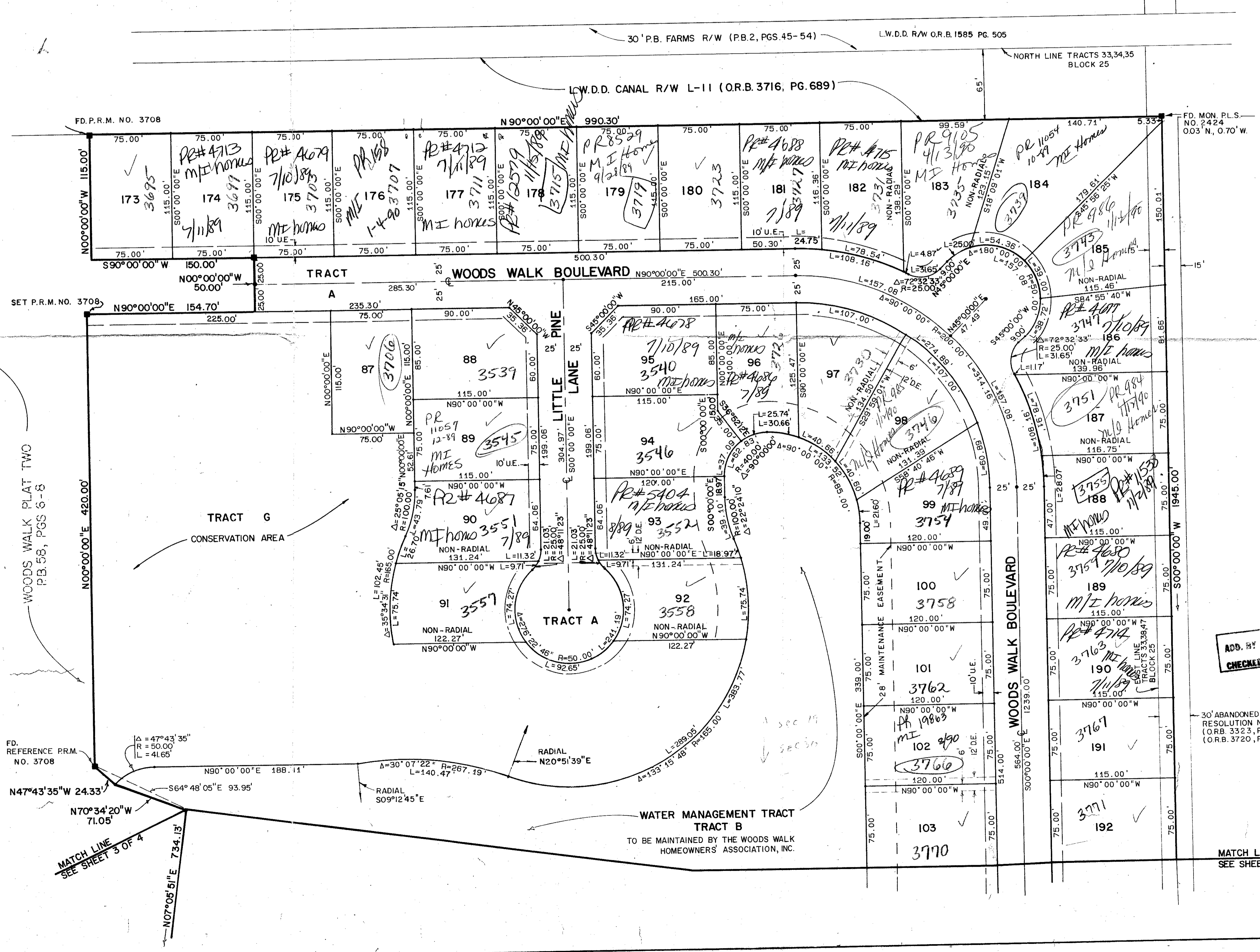
SHEET 2 OF 4



STATE OF FLORIDA  
COUNTY OF PALM BEACH  
THIS PLAT WAS FILED FOR  
RECORD \_\_\_\_\_ DAY OF \_\_\_\_\_  
AD, 1989 AND DULY RECORDED  
IN PLAT BOOK \_\_\_\_\_ ON PAGES  
\_\_\_\_\_ AND \_\_\_\_\_  
JOHN B. DUNKLE, CLERK  
BY: \_\_\_\_\_, D.C.

LOCATION MAP

PALM BEACH FARMS COMPANY PLAT NO. 3  
(PB. 2, PGS. 45-54)



CYPRESS TRAILS, R.U.D. PB. 42, PGS. 28-30

ADD. BY [initials]  
CHECKED BY [initials]

0345-001

SEWALK REQUIRED  
TURNOUT REQUIRED

63/44

SUBDIVISION \* Woods Walk Plat 3  
BOOK 63  
FLOOD MAP # 164170  
ZONING R17S 85-71  
QUAD 14  
SE 1/4  
FED NAME TAZ 735

Meridian Surveying and mapping inc.

|             |           |   |           |
|-------------|-----------|---|-----------|
| DRAWN       | M.H.C.    | DATE  | JAN. 1989 |
| CHECKED     | M.A.M.    | SCALE   | 1" = 50'  |
| DRAWING NO. | 86-P3-103 | WOODS WALK PLAT THREE<br>PART OF<br>WOODS WALK P.U.D. |           |

2000 LOMBARD STREET  
WEST PALM BEACH, FL.